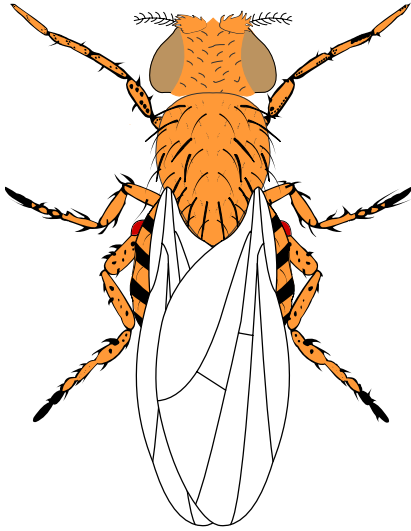
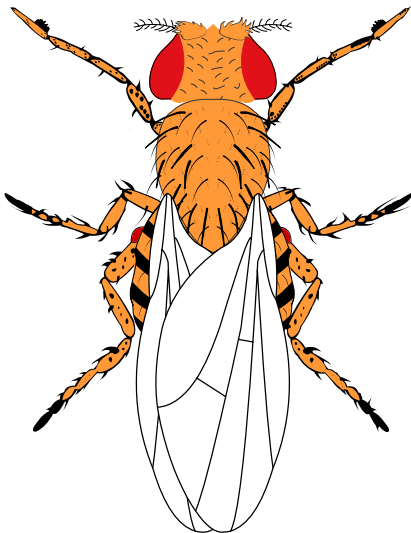


Notebook session started: 3/14/2009 10:01:55 am



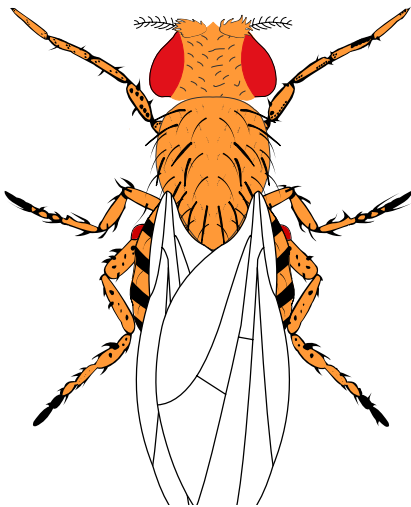
Parent for Cross #1
Female;Brown eyes

Fly Phenotype of a Parent



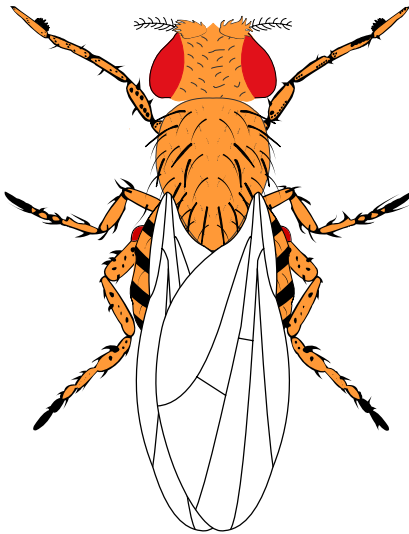
Parent for Cross #1
Male;Wild Type

Fly Phenotype of a Parent



Offspring of Cross #1
Female;Wild Type
Number with this phenotype: 640
Parents:
Female;Brown eyes
X

Fly Phenotype resulting from mating



Offspring of Cross #1

Male; Wild Type

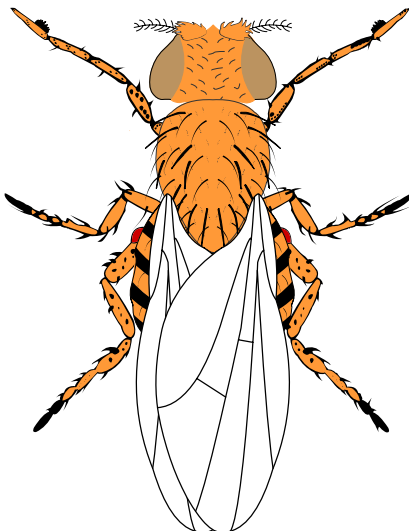
Number with this phenotype: 581

Parents:

Female; Brown eyes

X

Fly Phenotype resulting from mating



Offspring of Cross #2

Male; Brown eyes

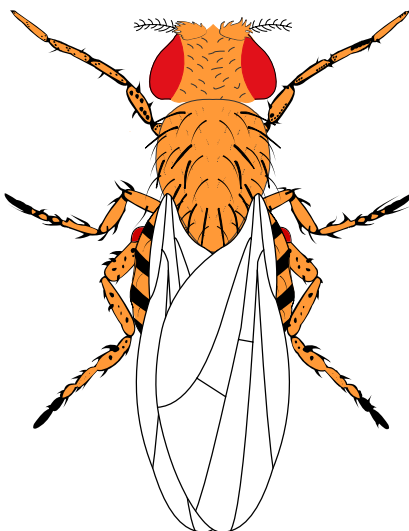
Number with this phenotype: 144

Parents:

Female; Wild Type

X

Fly Phenotype resulting from mating



Offspring of Cross #2

Female; Wild Type

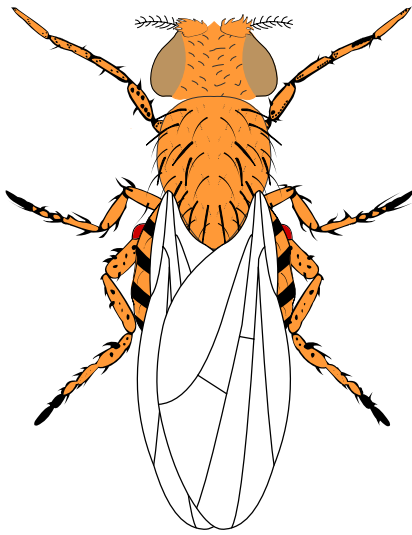
Number with this phenotype: 443

Parents:

Female; Wild Type

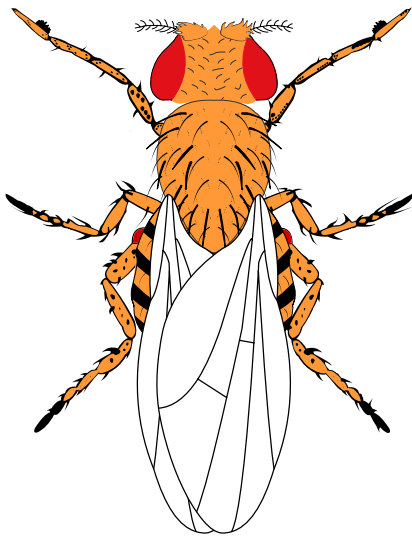
X

Fly Phenotype resulting from mating



Offspring of Cross #2
Female;Brown eyes
 Number with this phenotype: 160
Parents:
Female;Wild Type
X

Fly Phenotype resulting from mating



Offspring of Cross #2
Male;Wild Type
 Number with this phenotype: 439
Parents:
Female;Wild Type
X

Fly Phenotype resulting from mating

Cross #2 - Parents:
(Female: Wild Type)
x
(Male: Wild Type)

<u>Phenotype</u>	<u>Observed</u>	<u>Hypothesis</u>	<u>Expected</u>	<u>Chi-Square</u> <u>Term</u>
Female: Wild Type	443	3	444.75	0.0069
Male: Wild Type	439	3	444.75	0.0743
Female: Brown eyes	160	1	148.25	0.9313
Male: Brown eyes	144	1	148.25	0.1218
Total	1186	8	1186.00	1.1343

Chi-Squared Test Statistic: 1.1343
 Degrees of Freedom: 3
 Level of Significance: 0.7688

Chi-Square Analysis of Results